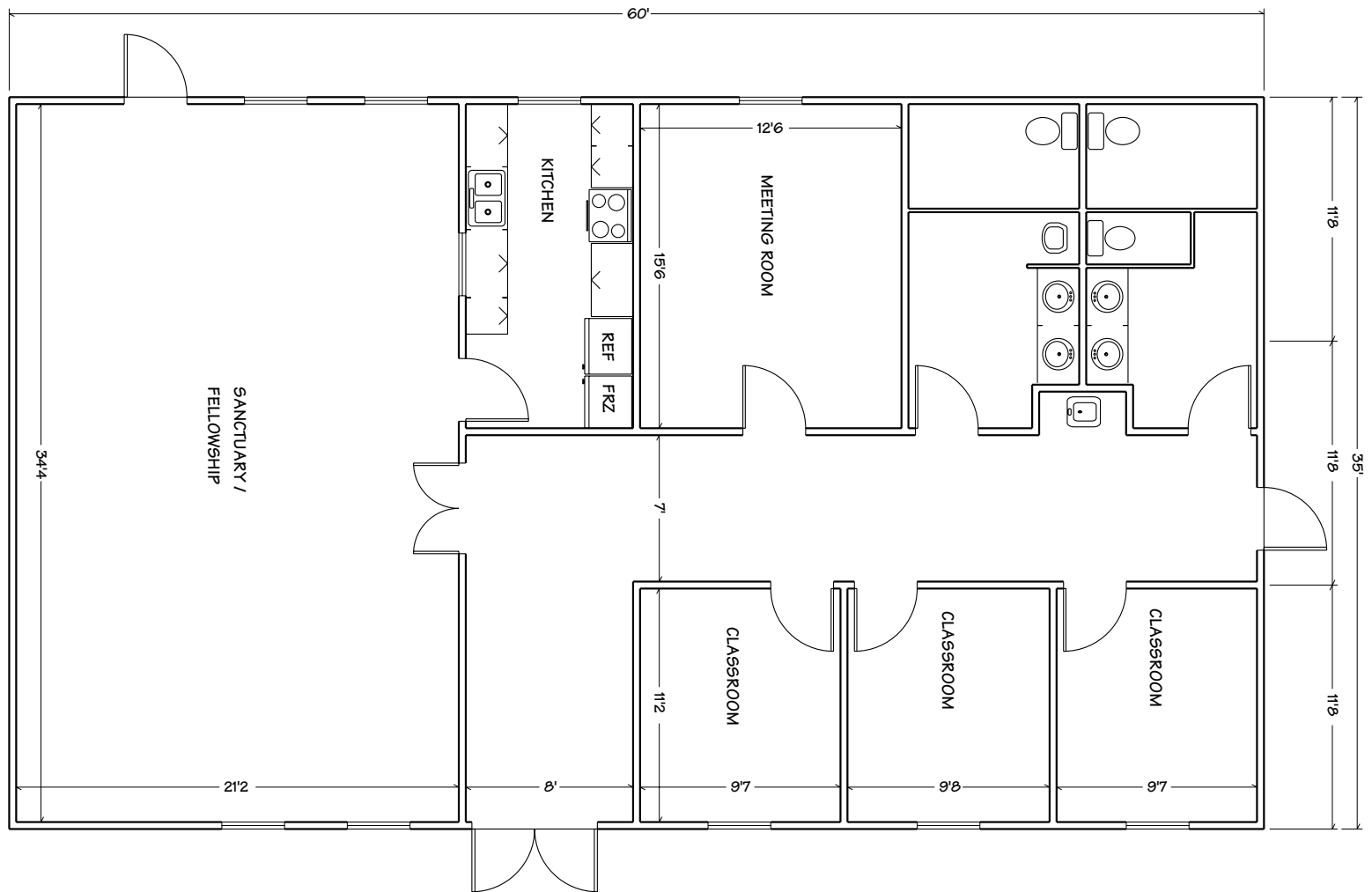


## HIGHLIGHTS

- 2,100 sq. ft.
- Fellowship Area
- 4 Classrooms
- Kitchen
- Restrooms
- Storage and more

## WORSHIP BUILDING WITH KITCHEN



**VANGUARD**  
MODULAR BUILDING SYSTEMS

Corporate Headquarters  
Valleybrooke Corporate Center  
100 Lindenwood Drive, Suite 200 • Malvern, PA 19355  
800-448-6772 • [www.vanguardmodular.com](http://www.vanguardmodular.com)

**SCHIAVI**  
LEASING CORPORATION

Corporate Headquarters  
102 Industrial Drive • Oxford, ME 04270  
877-349-9714 • [www.schiavileasingcorp.com](http://www.schiavileasingcorp.com)

OTHER SIZES AND  
FLOOR PLANS  
AVAILABLE

### GENERAL SPECIFICATIONS

- Meet or exceed local building codes
- Suitable for temporary or permanent use
- Customize this building to meet your space requirements