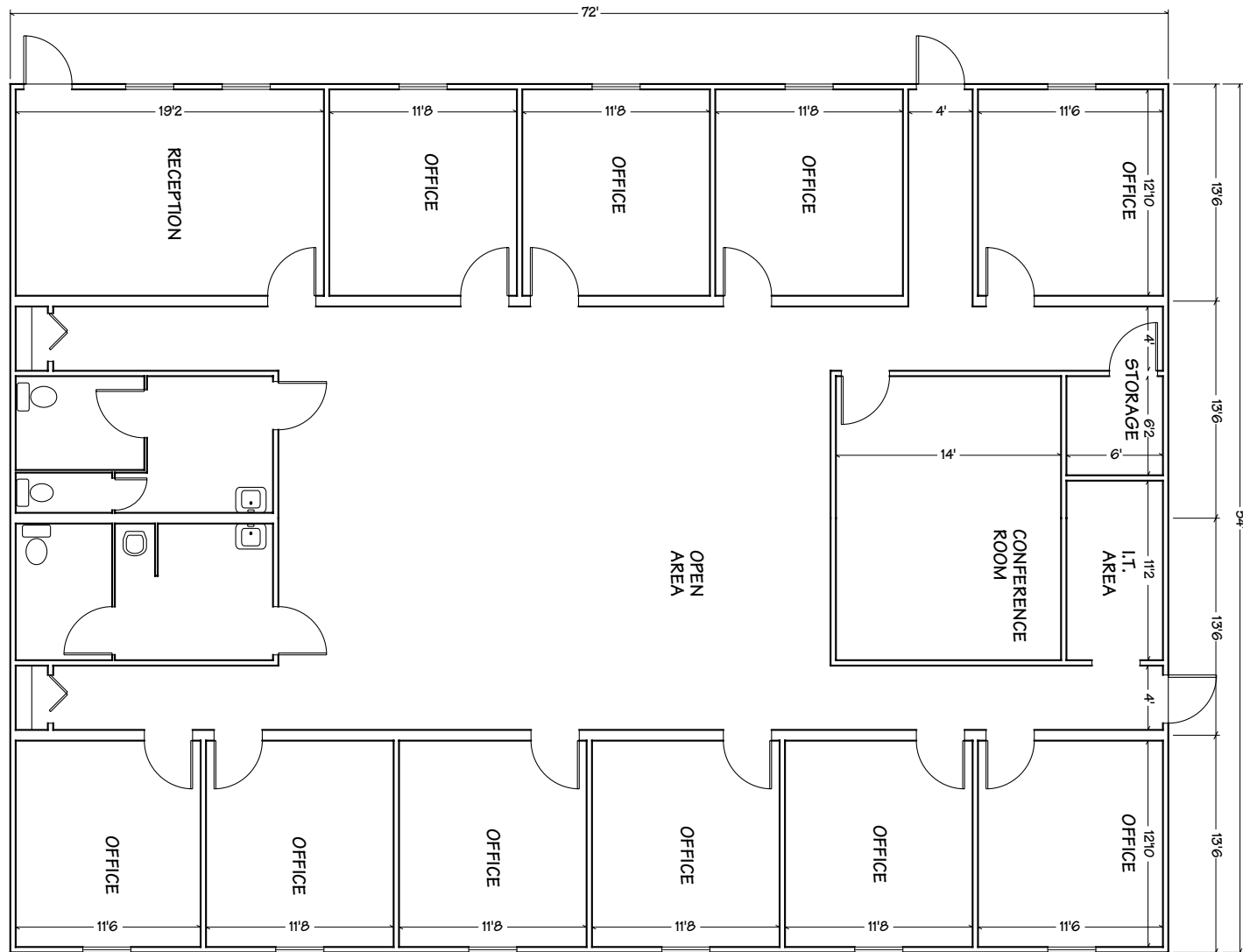


HIGHLIGHTS

- 3,888 sq. ft.
- 10 Offices
- Conference Room
- Restrooms
- Storage
- Open Space
- Reception Area
- I.T. Area
- and more

COMMERCIAL OFFICE FLOOR PLAN/LARGE



VANGUARD
MODULAR BUILDING SYSTEMS

Corporate Headquarters
Valleybrooke Corporate Center
100 Lindenwood Drive, Suite 200 • Malvern, PA 19355
800-448-6772 • www.vanguardmodular.com

SCHIAVI
LEASING CORPORATION

Corporate Headquarters
102 Industrial Drive • Oxford, ME 04270
877-349-9714 • www.schiavileasingcorp.com

OTHER SIZES AND
FLOOR PLANS
AVAILABLE

GENERAL SPECIFICATIONS

- Meet or exceed local building codes
- Suitable for temporary or permanent use
- Customize this building to meet your space requirements